

Section 3

Installation or Re-Installation or Restoration Term3

This section contains information about your Omnis Studio Runtime Program. It also assumes that you have encountered problems, for example, your computers hard disc has had a fatal crash and you are trying to rebuild your system.

The original system came complete packed on a CD with short cuts and fonts, this data will now be out of date.

The package also contained a back up CD and either a 185Mb mini CD containing fonts, your library files and paperwork with recommendations for them to be placed into safe storage.

3.1 Software Package Contents

The Microsoft Windows package should have the following articles of equipment::

- Manual (1 only)
- Disc CD (1 off) containing Omnis Studio Runtime
- Disc CD (1 off) containing the Quick Install
- Mini Disc (1 off) containing files (Est-st4-4w.lbs or Est-st5-4w.lbs, Copious5.lbs)

3.2 About Omnis Studio Runtime

The Omnis Studio is a Database type program; the version that is marketed is called Omnis Studio Runtime. The runtime version works in conjunction with another program module called an Omnis Studio Library. The Library can not have its structure or procedures modified at a runtime level. Any modifications have to be made on a full Omnis Studio developer version. Modifications can only be made when the appropriate passwords are entered. The other requirement you need is a data file, this is as the name suggest, where you keep your information (data).

So when you have the folder that looks like the following you have your basic system.



When Omnis Studio system is developed there are other files that are involved in your program. A graphic showing more details follows.

3.3 Installation

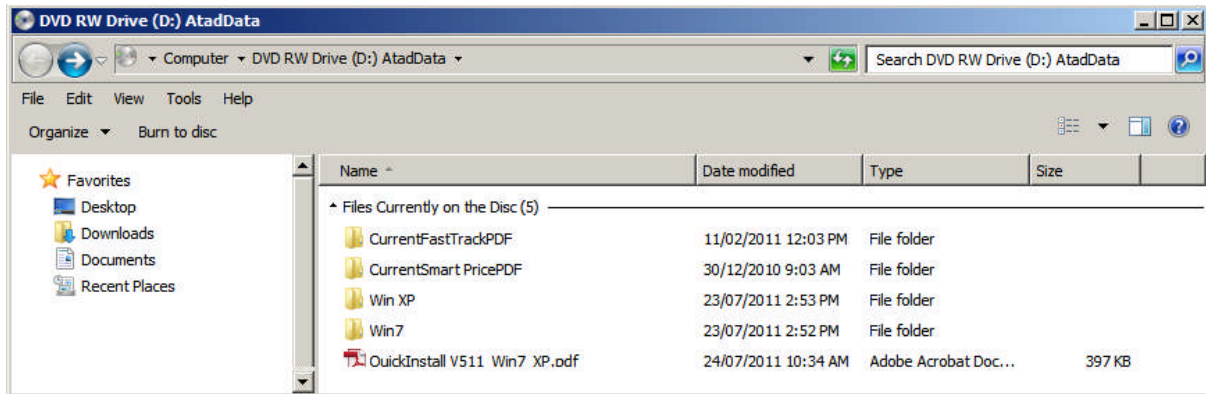
The steps to install the system are as follow;

Step 1

(Install your Quick Install CD)
Get your Quick Install CD ready.

Step 2

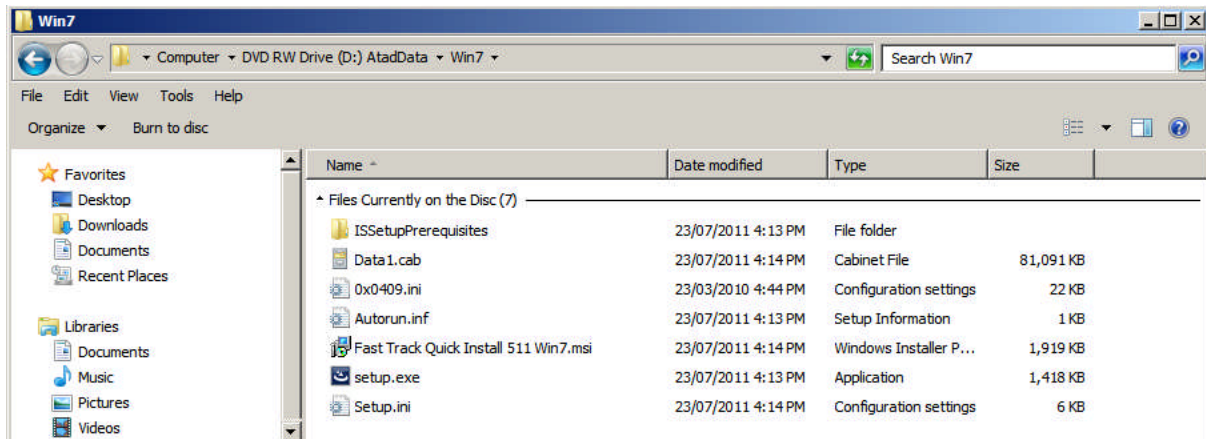
Open the CD, the following window should appear.



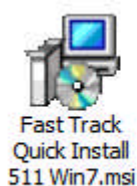
Then open the folder named Win 7 if your operating system is Window 7 or if you have window XP system, please select Win XP folder.

Step 3

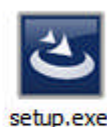
If you can see the folder contents as follow;



Double click the installation icon.

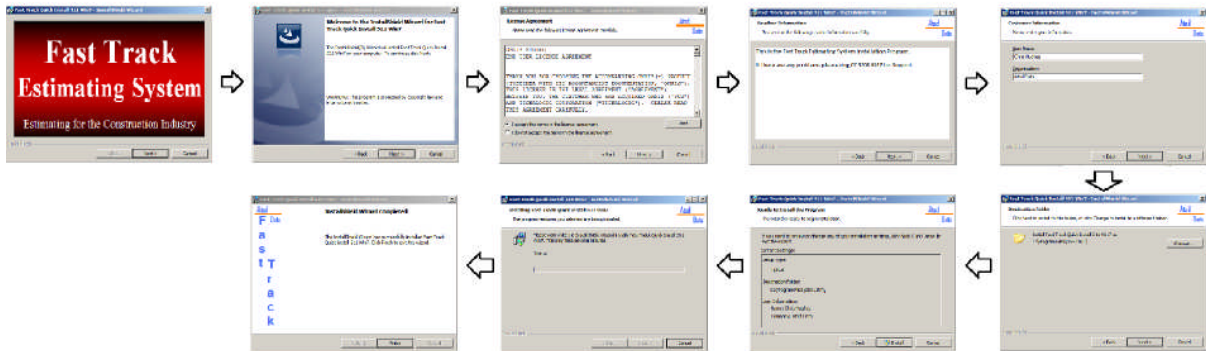


OR



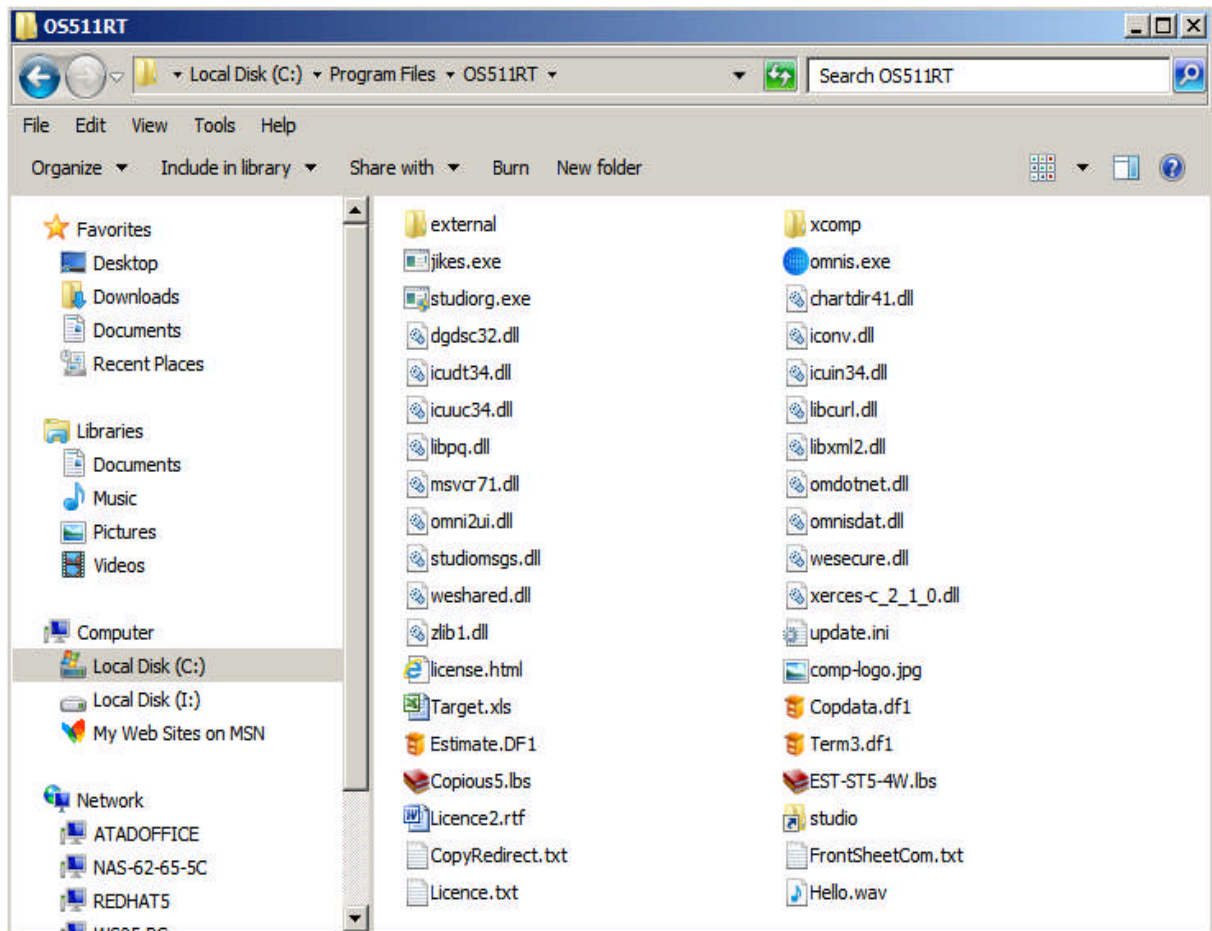
Step 4

The installation now has been started.



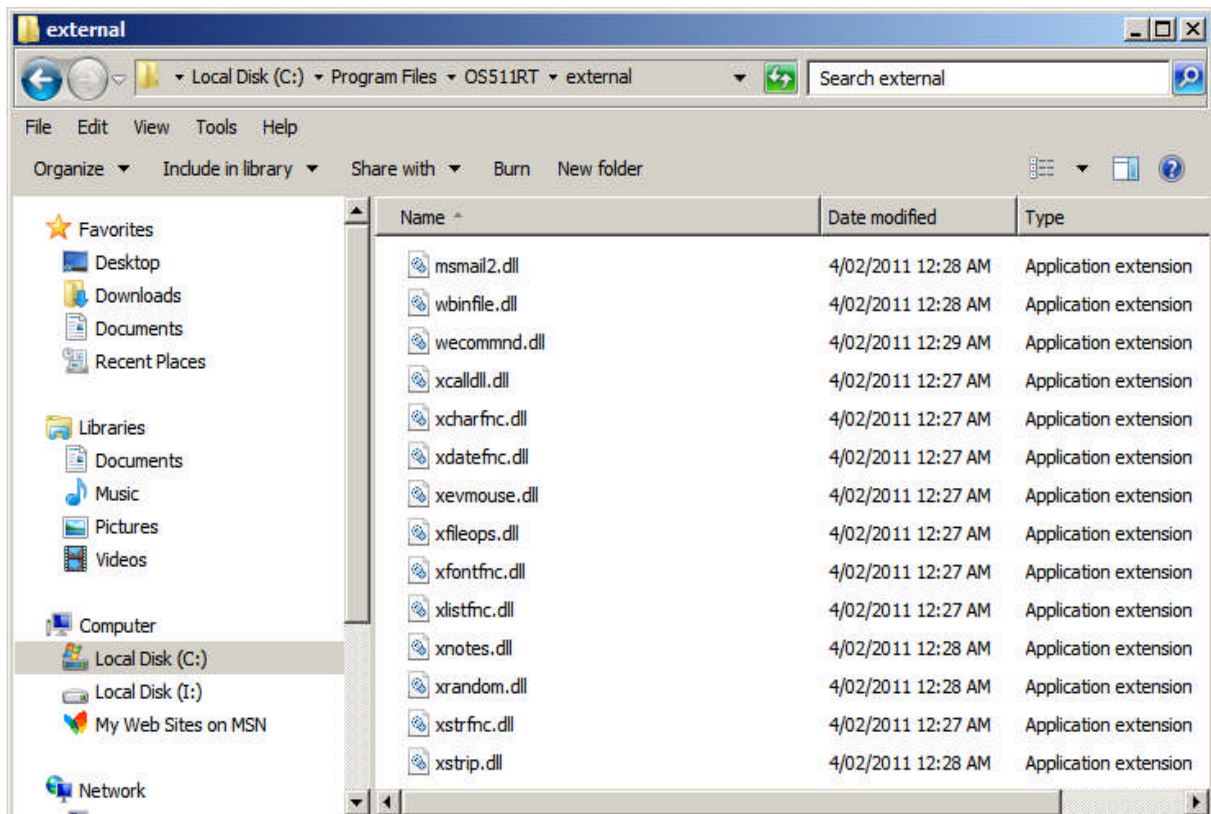
Step 5

When you finished the installation, your Fast Track Estimating System should contain the following files under C:\Program Files\OSXXRt.



All of the files shown above have important functions, some of the functions are critical to the operation of Fast Track and Smart Price. A brief description is given that may help diagnose problems should they occur:

- Omnis.exe Omnis the executable file the database engine (essential).
- Dgds32.dll Graphics engine for producing graphs.
- Omni2ui.dll Dynamic Link Library (.dll) resource file.
- Omnispic.df1 Data file contains all graphics for the buttons etc.
- Copdata.df1 Data file contains all the information from Copious Data Pty Ltd.
- Copious.lbs Library file that controls the way the database engine works. This file is “Smart Price“ and controls the interaction between the above mentioned files such as the data files and the Omnis.exe files, etc. This file is written by Atad Data and when changes to the program are made, must be replaced.



The “External” folder and files are located within the OS511RT folder and have the following functions:-

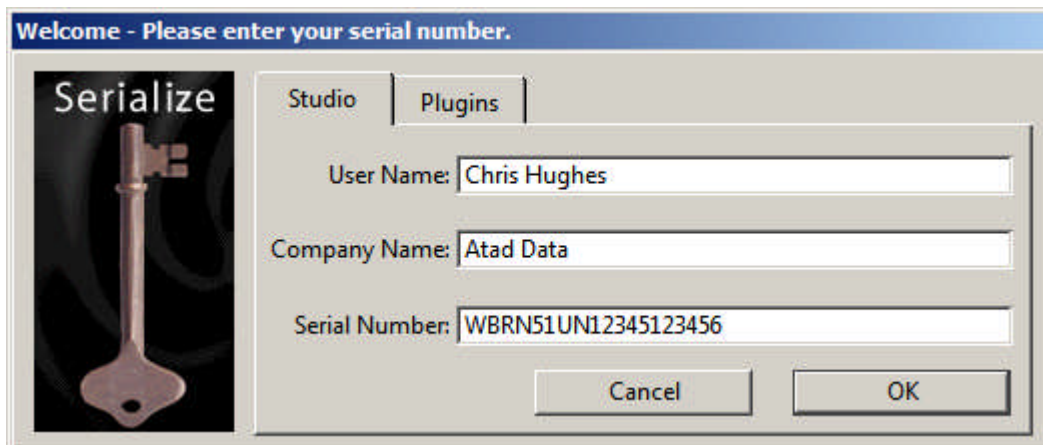
- Fileops.dll + Replace.dll+ Getfiles.dll - are Dynamic Link Library (.dll) and are for file operations.
- Graphs.dll - is a Dynamic Link Library (.dll) for linking the graphing operations together.

The remainder are .dll files and are for various other functions.

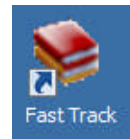
Step 6

Double click  icon for the serialization.

Then type in User name, Company name, Serial Number as shown below. The **“Serial Number”** is found in section 3.5 Serial Numbers in Section 3, page 8 of your manual.



If you have finished the serialization, now you are ready to use FastTrack. You can find shortcut of FastTrack on your desktop.

**3.4 Windows Re-Installation**

If your hard disc has crashed and is beyond repair, a new one should be installed ready to rebuild your Smart Price or Fast Track Estimating System. Please find the following steps to re-establishing your system.

To start with, you must be in Microsoft Windows, have about 100 Meg of spare disc space and have your back up disc removed from your safe storage area and ready to go.

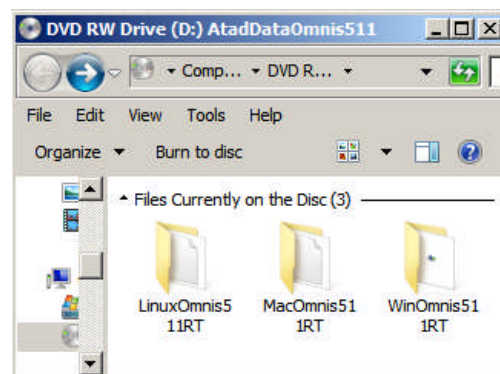
Step 1

(Install your Omnis Studio Runtime)

Get your Omnis Studio Runtime CD ready.

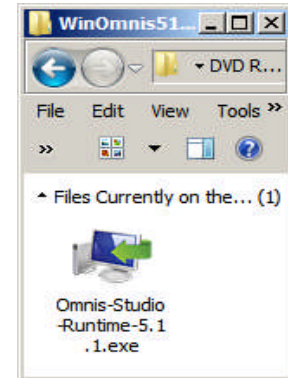
Step 2

Open the CD, the following window should appear.



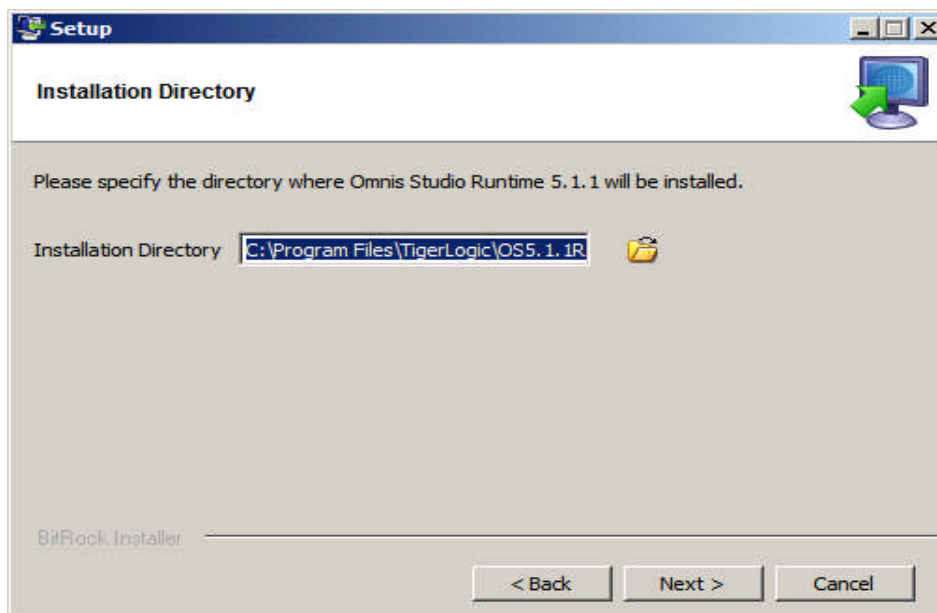
Step 3

Select one of three folders as your operating system. For example, if you are using window system, please select WinOmnis511RT folder. Then another window will open which contains install file. When you click on the runtime icon the Installation procedure will run.

**Step 4**

Various windows will open such as 'Accepting Legal Responsibility' for the Omnis Studio Runtime. Advance through these by using the "Next" button.

The next important window that will open is the following. Please set the following command line "C:\Program Files\OSXXRT" to the latest version you are installing instead of the one shown.



Click on the "Next" button and the installation process will continue.

Step 5

The install asks various other questions about shortcuts, answer "Yes", you can modify these later.

The install program will prompt you to restart your computer, this should be done to complete the installation of the Runtime.

Step 6

The next step is to load the Library files. These could have been updated since your initial installation of the program. Find the latest library file updates, these will have to match your data file. Each disc should be date stamped.

To load, simply copy from the mini CD onto the hard disc drive into the folder called "C:\Program files\OSXXRT" as you would with an update.

Please note: If copying from a CD the properties of that file will have to be changed from "Read Only".

Step 7

Once the **"Install program"** has completed its task, you need to set up your icons as per the following instructions:

- Right click on the **"Desk Top"** then click on **"New"**, then click on **"Create Shortcut"**.
- When the 'Shortcut Wizard' window appears, click on the button called **"Browse"**.
- Find **'My Computer'**, click on C: Drive and locate **'Program Files'** and find the folder called **"OSXX RT"** (the latest version) then find the file called **"Copious"**.
- Click on the **"Next"** button and enter the name **"Fast Track Estimating System or Smart Price"**.

Step 8

The program is almost ready to go, however, this is dependent on what backup system was implemented, if you backed up the file Copdata.df1. This file may be located on your C:Drive or on your Server. If unsure check with your Network Administrator.

Finish

If not, go to Step 9.

Step 9

Open the "Fast Track" program, you will be asked for a **"Password Number"**, enter Level 1.

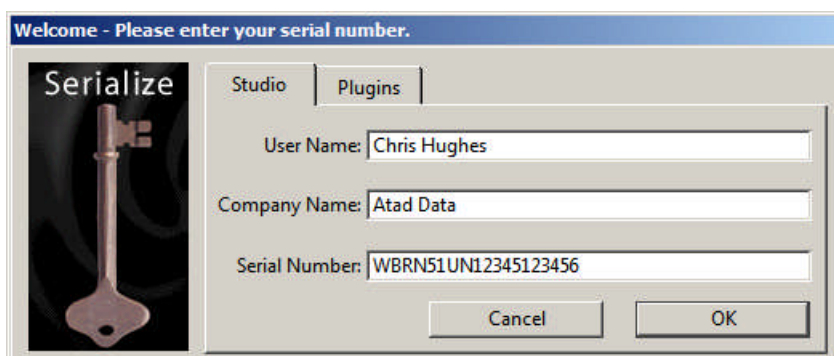
The library file is looking for a data file, the **"Change Data File"** window will open, because the data file is gone you will have to click on the button called **"New Data File"** a new window will appear. Now create a new data file called **"Copdata.df1"**, if necessary or locate on Server.

You should also open the **"Smart Price Pricing System"** and repeat the creating the new data file procedure and call it **"Copdata.df1"** (or Term3.dfl when in Fast Track).

This system should now be ready to run, leave the setting at Default, your single user Omnis will launch in single user mode. Ask your Omnis System Administrator which selection is appropriate for you.

Step 10

When Omnis Studio runs for the first time it needs to be serialised, the following screen will appear.



Enter the “**User Name**” this can be for example, Estimator No.1, and “**Company Name**”. The “**Serial Number**” is found in section 3.5 Serial Numbers in Section 3, page 6 of your manual.

3.5 Serial Numbers

Program Serial Number:	<input type="text"/>
Runtime Omnis Studio Program Number:	<input type="text"/>
Password (Level 1):	<input type="text"/>
Password (Level 2):	<input type="text"/>

When the program starts, the operator will be asked for a password, enter a password that has been issued and then just click “**OK**” or press “**Return**”, this restricts access to the system.

3.6 Restoration of ‘Term3.df1’ Data File

For some reason you need to restore the backup for reasons such as a lot of data has been deleted accidentally from an estimate, or the data file has become corrupted.

The best practice is to close down “Fast Track” and rename the “Term3.df1” for example to “XXTerm3.df1”. This data file is usually found adjacent to the “Omnis.exe” file. The renaming is done as a precaution. The “Term3.df1” data file is most times found in the following location:- “C:\ Program Files\OS511RT”.

The next step is to go to your backup location and copy the backup version into your C drive and restart your Fast Track. If everything is OK then proceed as normal, and at a later date discard the old renamed “XXTerm3.df1” to keep your system tidy.