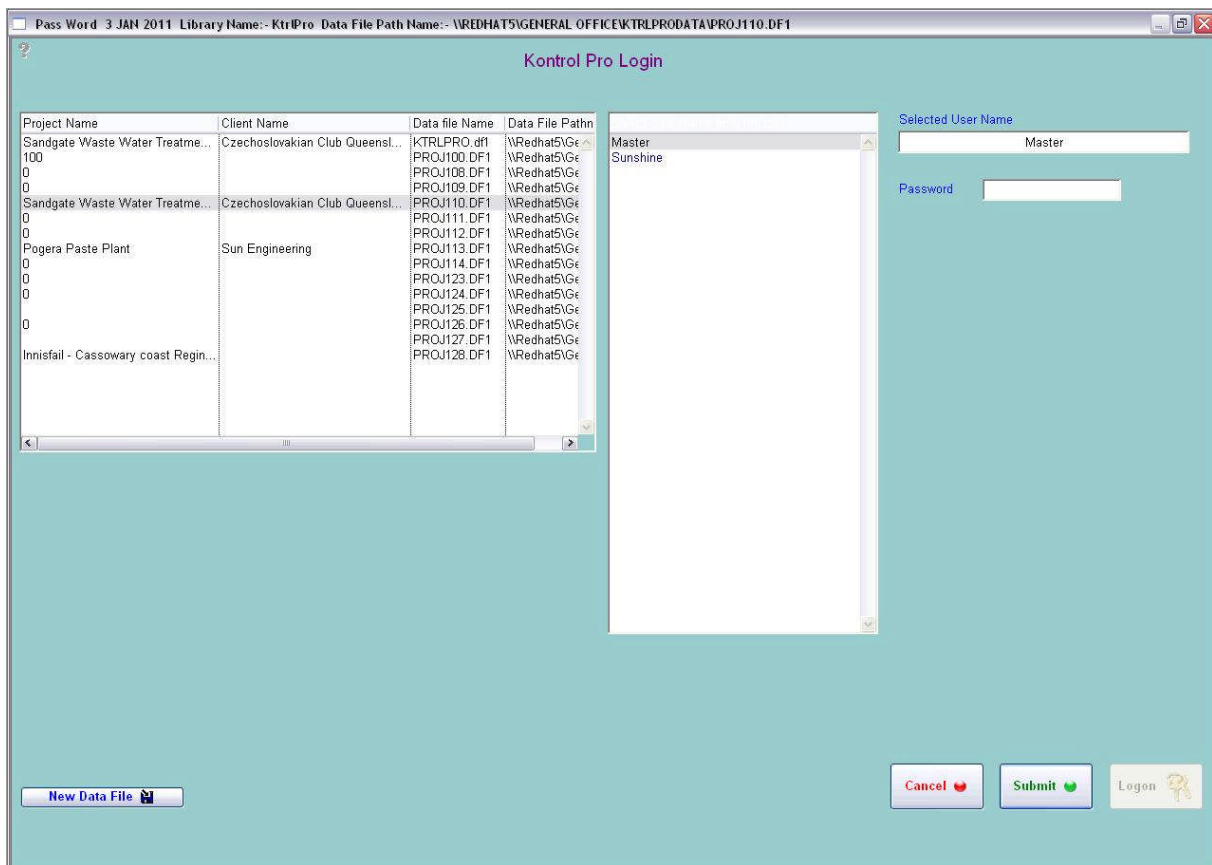


Category 7

7.0 Change Default Project



This controls the project you are working on. Should you wish to change Projects, you will find the “change Default Project” button in the bottom left-hand corner of the “Documentation” window. Then simply click on the required project.



Question Mark

Place cursor over the Question Mark and click once. The Question Mark will change colours, then move the cursor over any button and it will describe the button’s function.

Notes