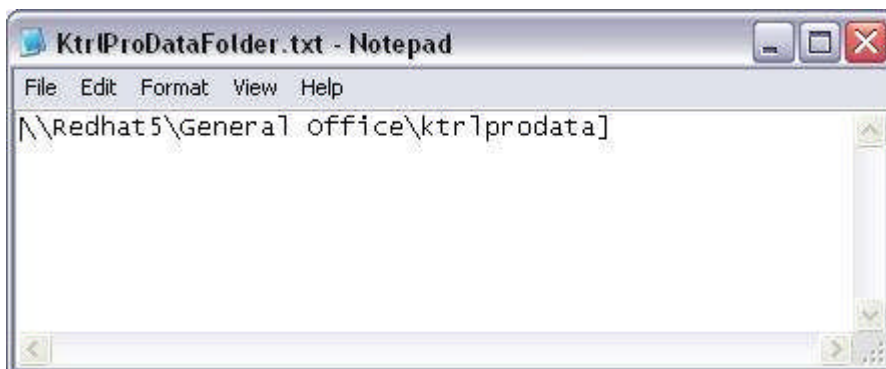
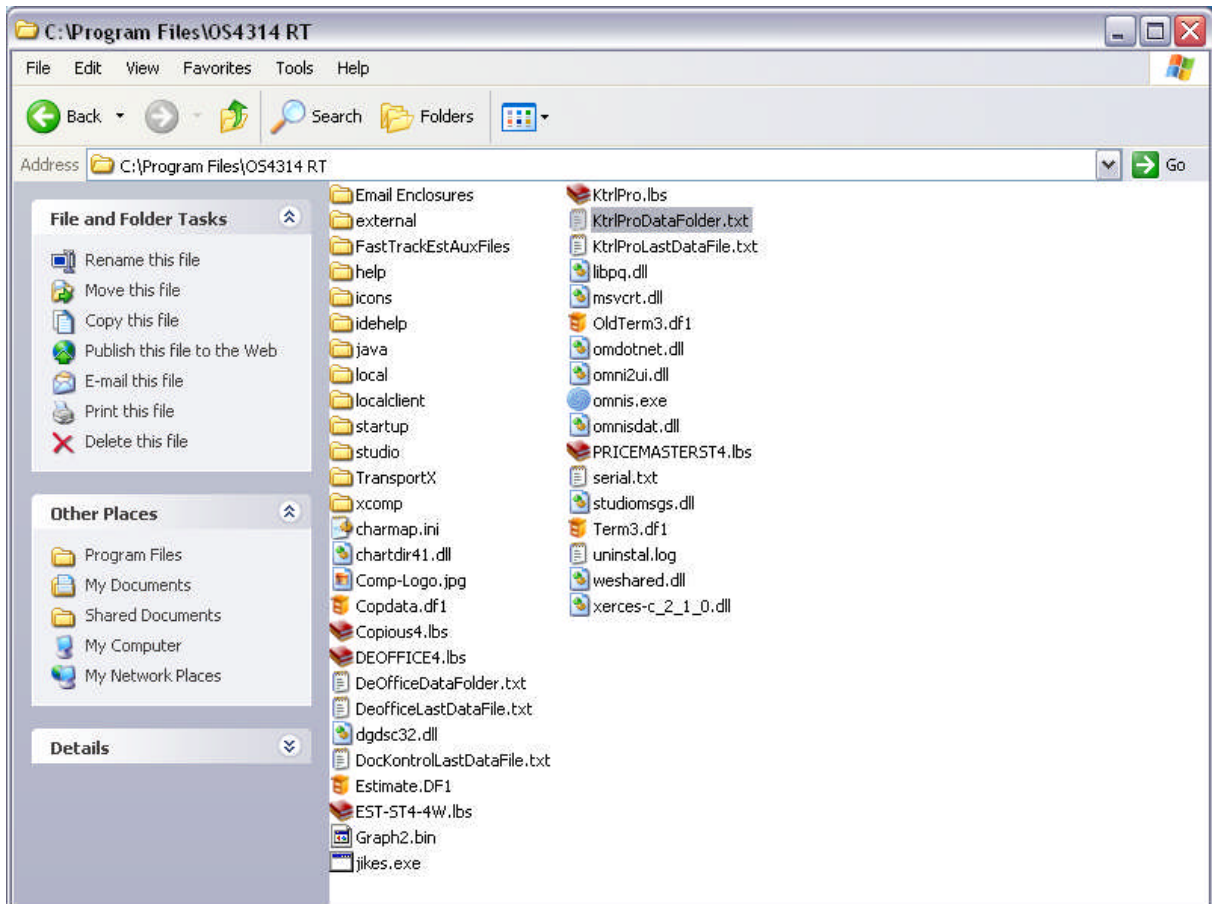


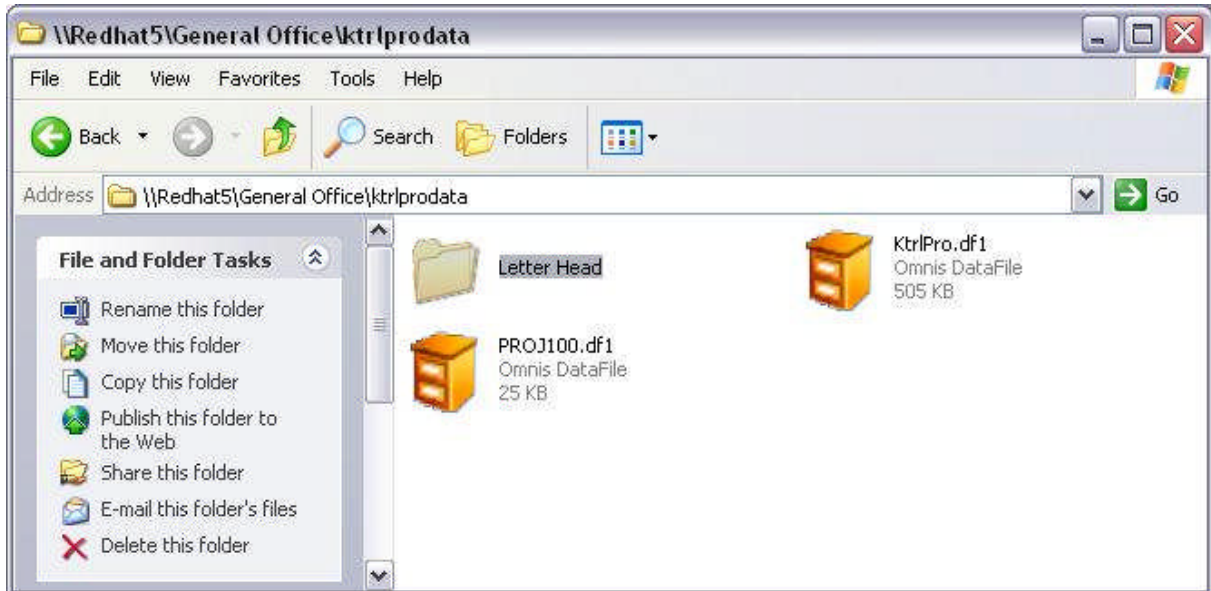
Category 1

5.0 Redirect

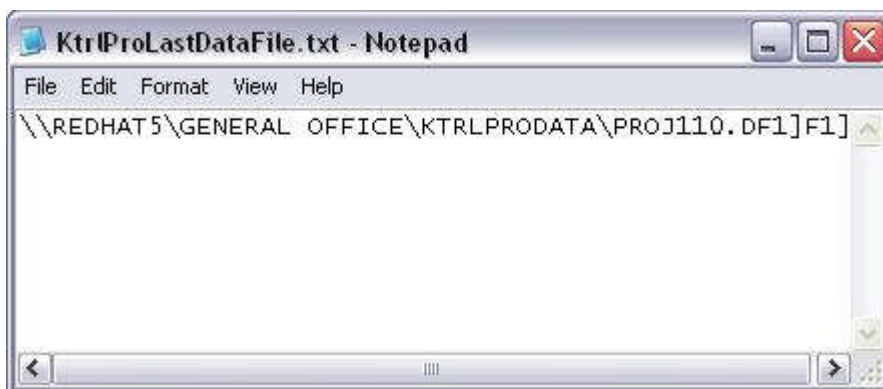
When the Omnis Library files starts from the shortcut, the next process is to start the Omnis.exe file (Data base Motor). – The library file has an instruction in starting to look for a redirect.txt file called “ ktrlprodatafolder.txt”. This contains the path name for the folder location (This saves time for the user to looking for the folders every time the KtrPro start).



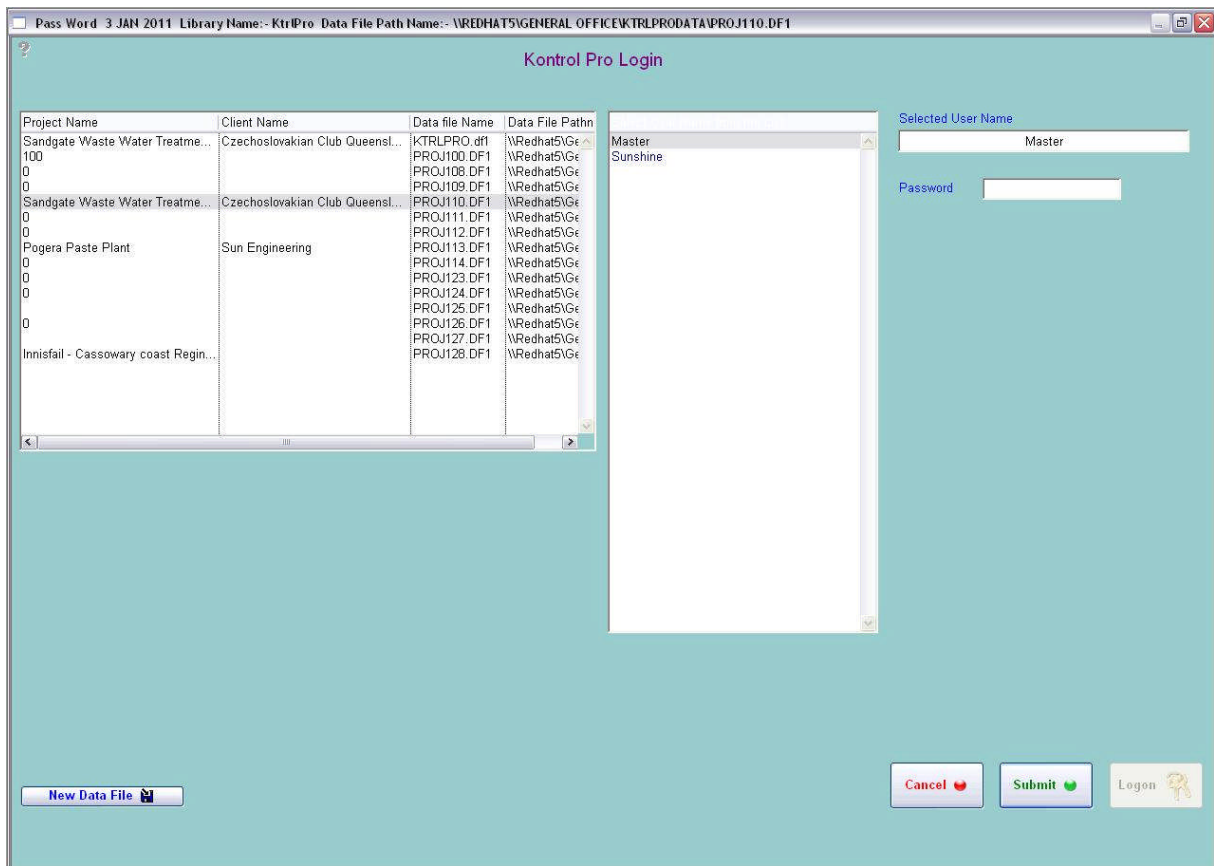
The nominated folder contains 2 or more data files. The resident data files is called “ktrlpro.df1” system information is started in this data file.



So the project can be run from this system they are given a name starting form “PROJ001”. When a new project is added, the number is usually consecutive such as “PROJ101.dff”. All relocated data is stored in the project data file. This enables for easy archiving, this done by removing the data to another back up location. This reduces time to system loading up and closes down the system.



It remembers the last project that the user had opened. This highlights the line in the table and makes enter into smaller table the list of eligible users. This information is also started in a text file called “ktrlprolastdatafile.txt”.



The project that may be used on site can be backed up to the head office. This enables management to keep a breast of what is happened on site.
 If the location is moved to another computer or folder location then the path name has to be changed and saved all other system and need to be updated as well.