

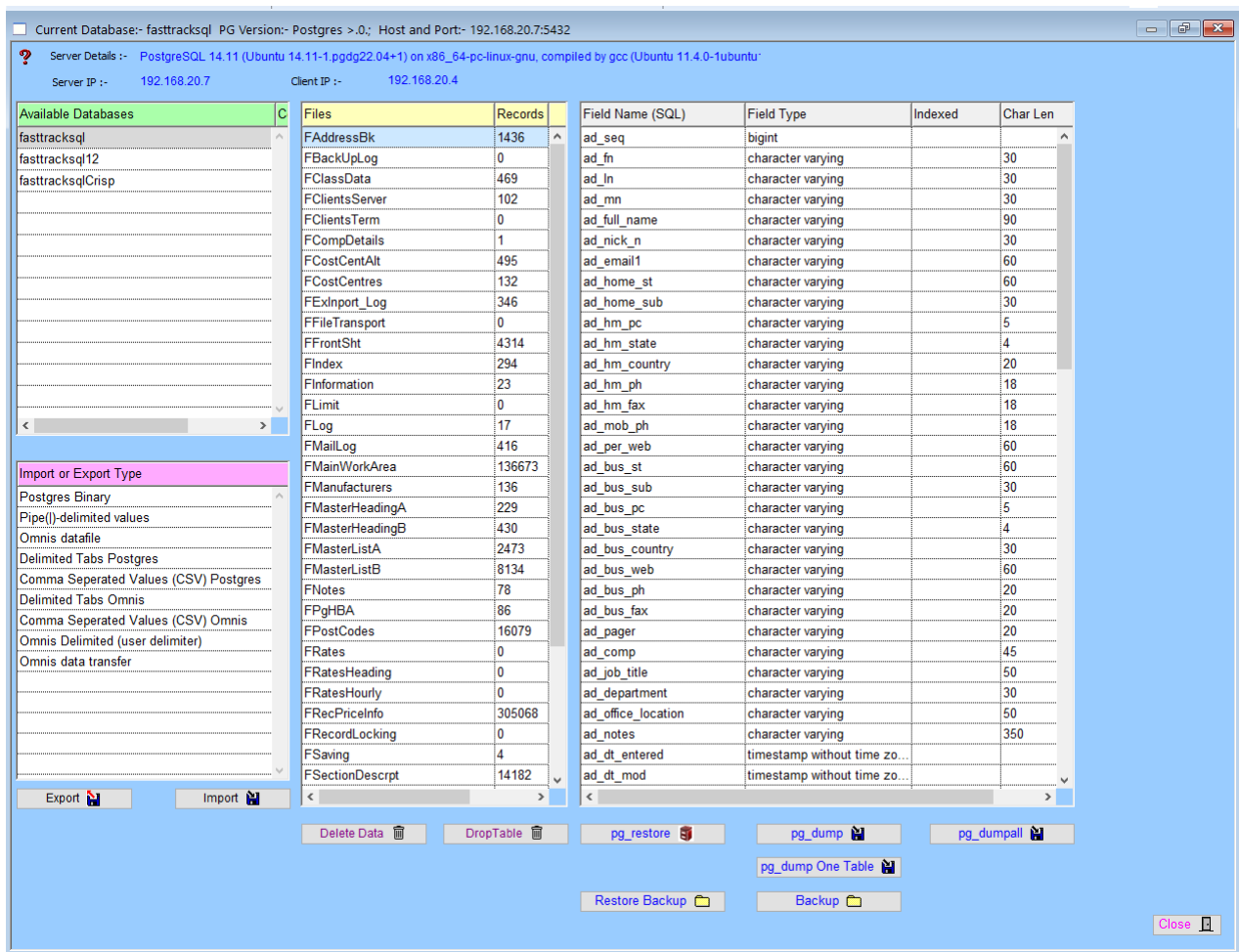
Section 6

Postgres SQL File Utilities

6.10

The basic aim of File Utilities is to be able to Import or Export various forms of data into your database, these forms for example can be Delimited tabs and CSV files

Note Please be aware some functions are still under construction, because we are aiming at be able to satisfy the needs of Windows, Linux and Macintosh systems. These change constantly.

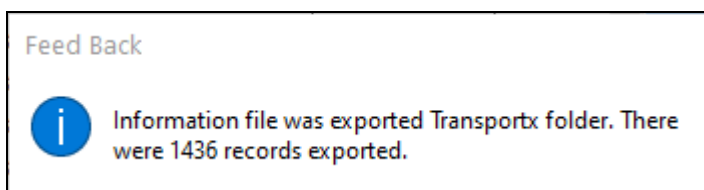


The typical method for example is exporting your address book data :-

Step 1 Highlight the file “FAddressBk” line in Files column.

Step 2 Delimited Tabs Omnis in the “Import or Export Type” column.

Step 3 Now click on the “Export” button, this should export to folder on your system



Importing is virtually the reverse of exporting.

This folder is unusually located in the following location:-

C:\Program Files\OS613\Transportx.

Other files are sent to this location, if used frequently created a short cut.

Data Types.


- 1 Postgres Binary.
- 2 Pipe(|)-delimited values.
- 3 Omnis datafile.
- 4 Delimited Tabs Postgres.
- 5 Comma Separated Values (CSV) Postgres.
- 6 Delimited Tabs Omnis.
- 7 Comma Separated Values (CSV) Omnis.
- 8 Omnis Delimited (user delimiter).
- 9 Omnis data transfer.

Notes on exporting, Postgres usually works on UTF8 data format.


When viewing the “Field Name (SQL)” column and some “Field Type” are designated “bytea” this means that the data in that field is Picture or List structure, or similar.

This data can not be exported in Delimited Tabs or CSV formats.

For example the “FInformation” contains large pictures this, should be exported via “Omnis data transfer”

Export 


Used in the Export data procedure.

Import 

Used in the Import data procedure.


Delete Data 

This deletes the data from SQL database, however does delete the table that holds the data.

DropTable 

This deletes the Table in the SQL database. The table must be created again before data can stored in this table.


Note most of these procedures can be done via PGAdmin4

pg_restore 

This runs a restore procedure from data that has been saved in below formats.

pg_dump 

This procedure dumps a nominated data base the specified location.

pg_dumpall 


This procedure dumps all data base's to specified file name and location, not recommended.

pg_dump One Table 

This procedure dumps a selected table to a specified file name and location.

Restore Backup 

This procedure restores a one table backup to selected table.

Backup 

Under construction.



Notes