

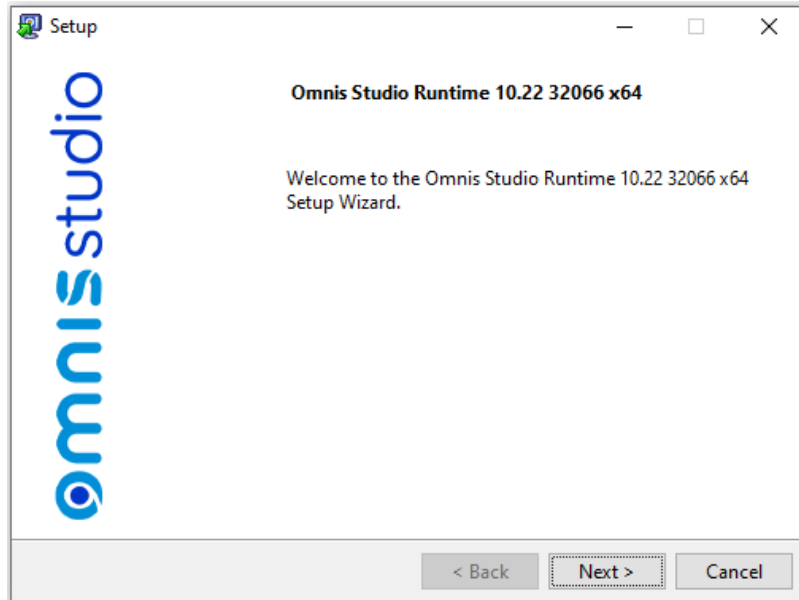
---

# Omnis Studio Install Instructions

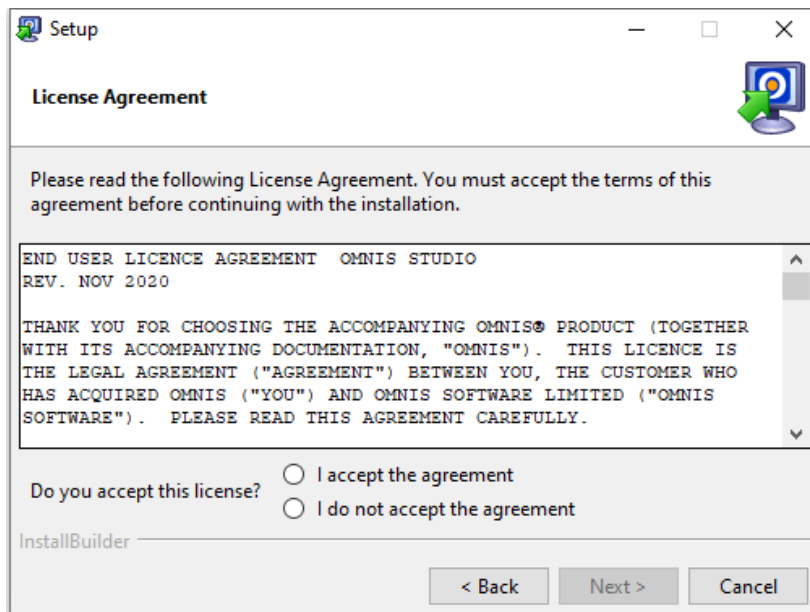
The Omnis runtime should arrive as a file called :-

Omnis-Studio-Runtime-10.22-32066-x64.exe

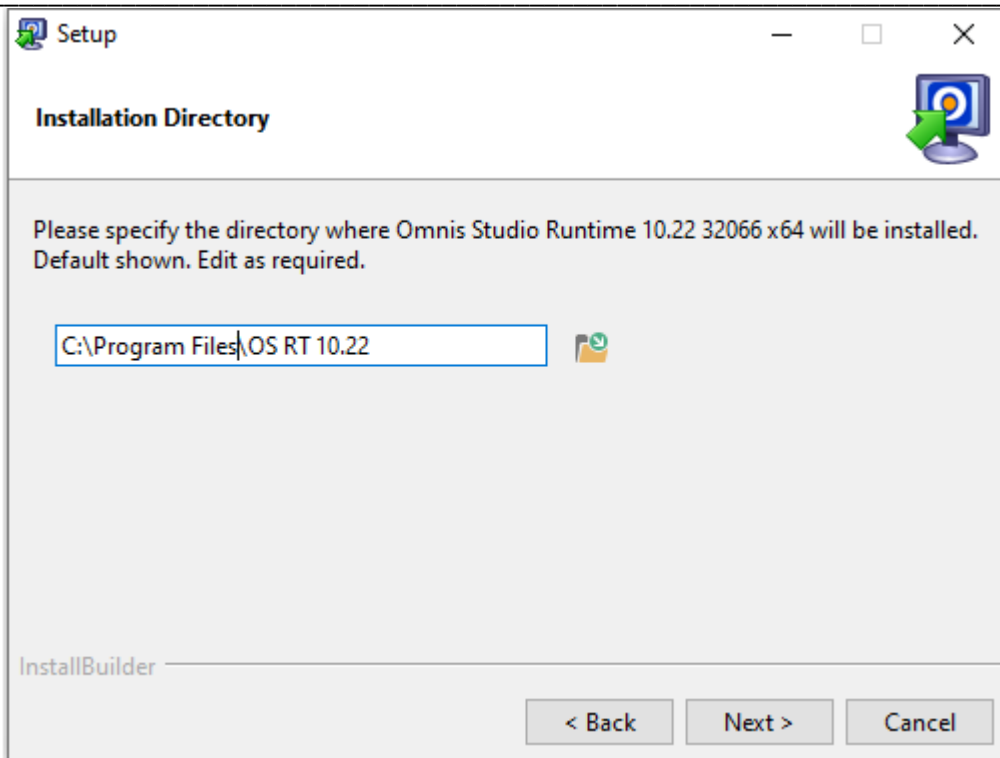
Double click on the on the icon and the following screen should appear.



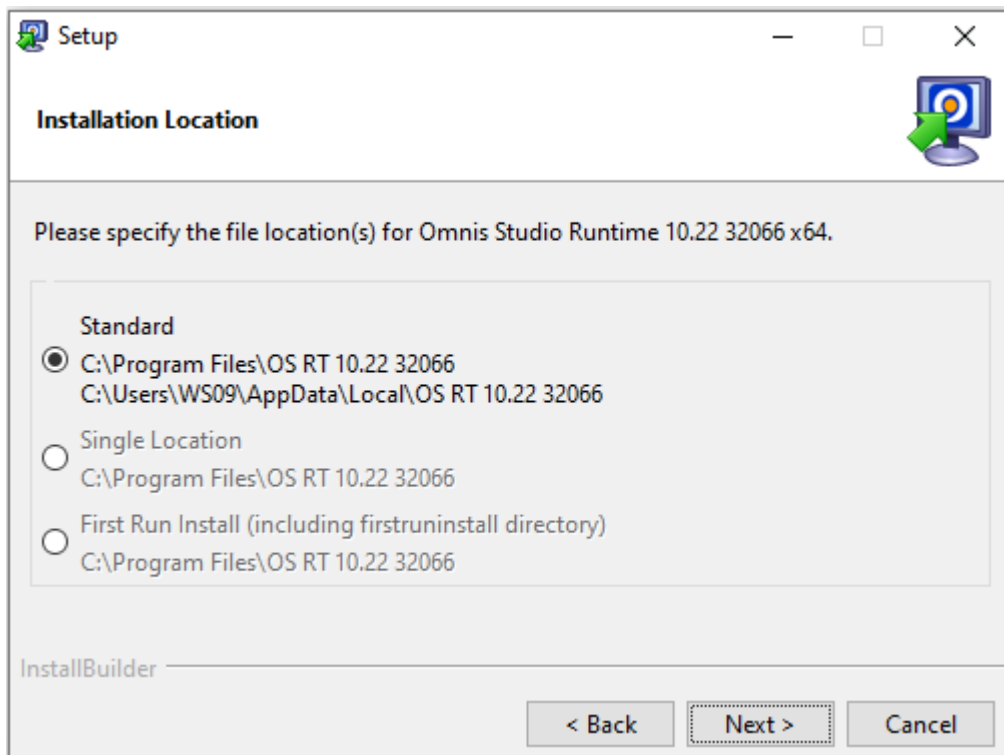
Next button should be pressed.



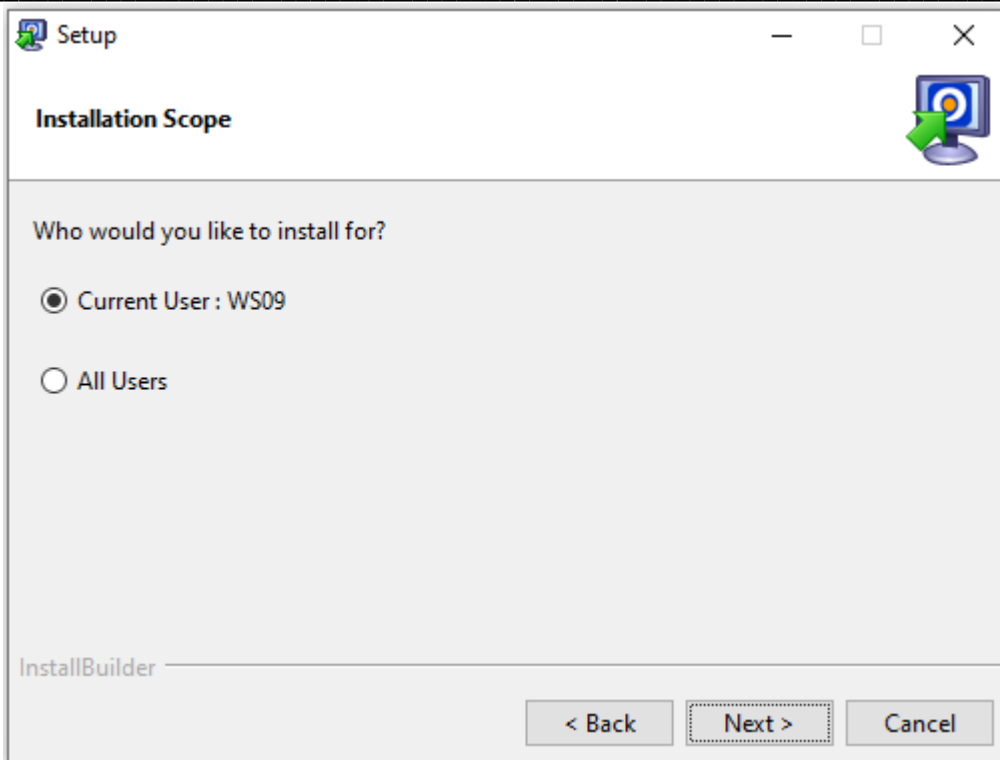
Next button should be pressed after acceptance.



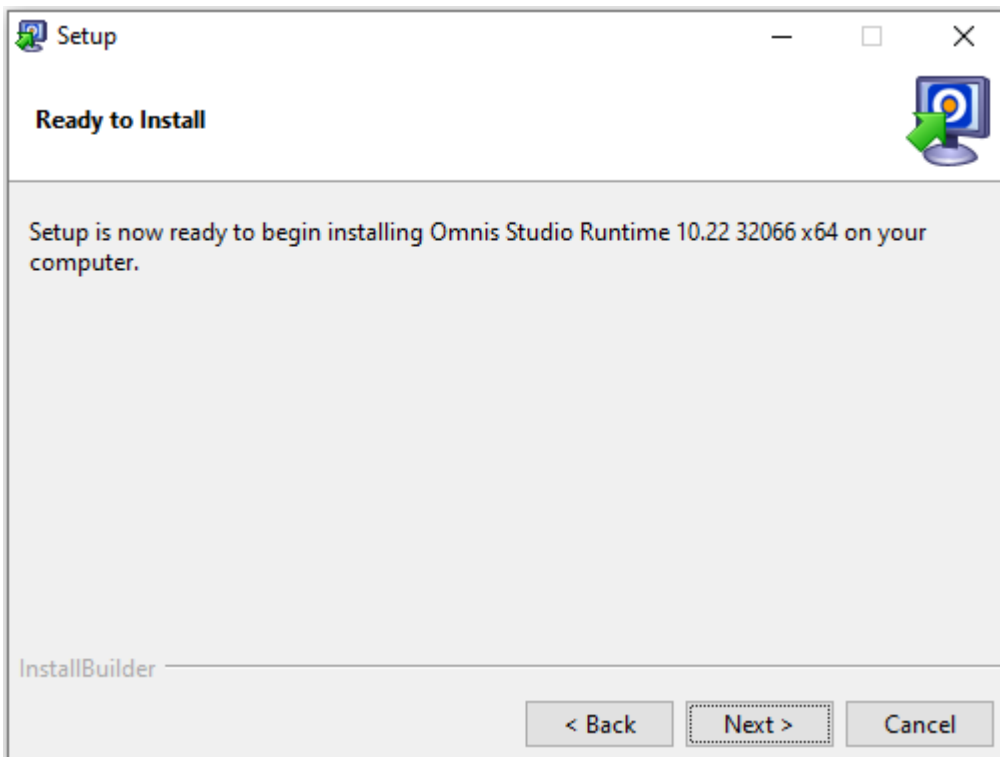
The installation path can be shortened to similar as above if required.



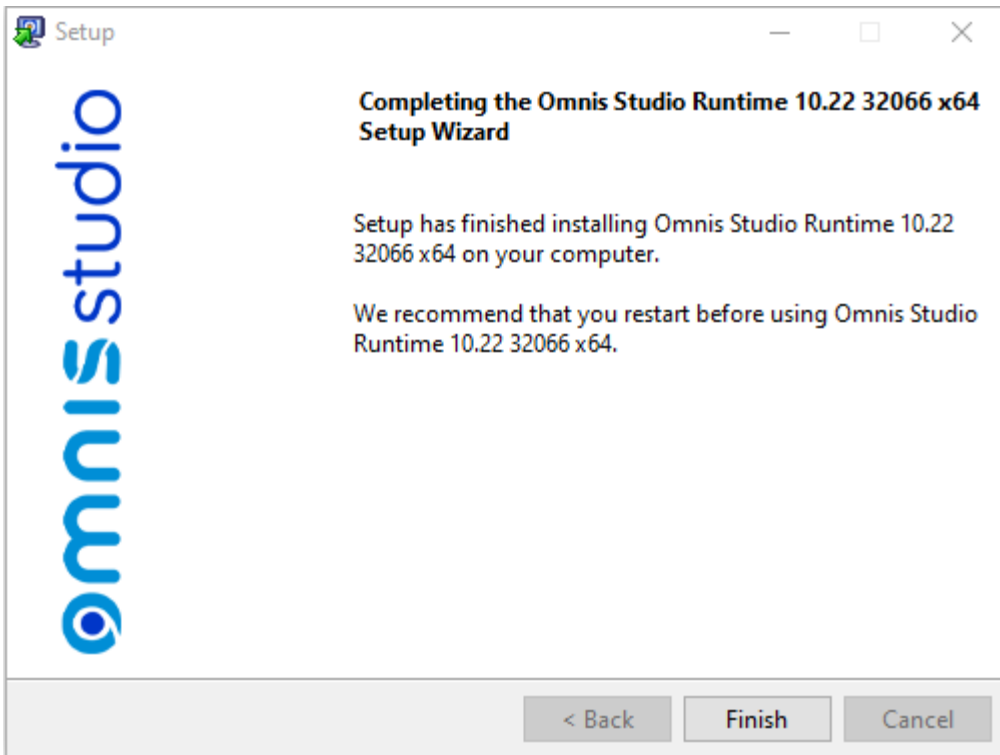
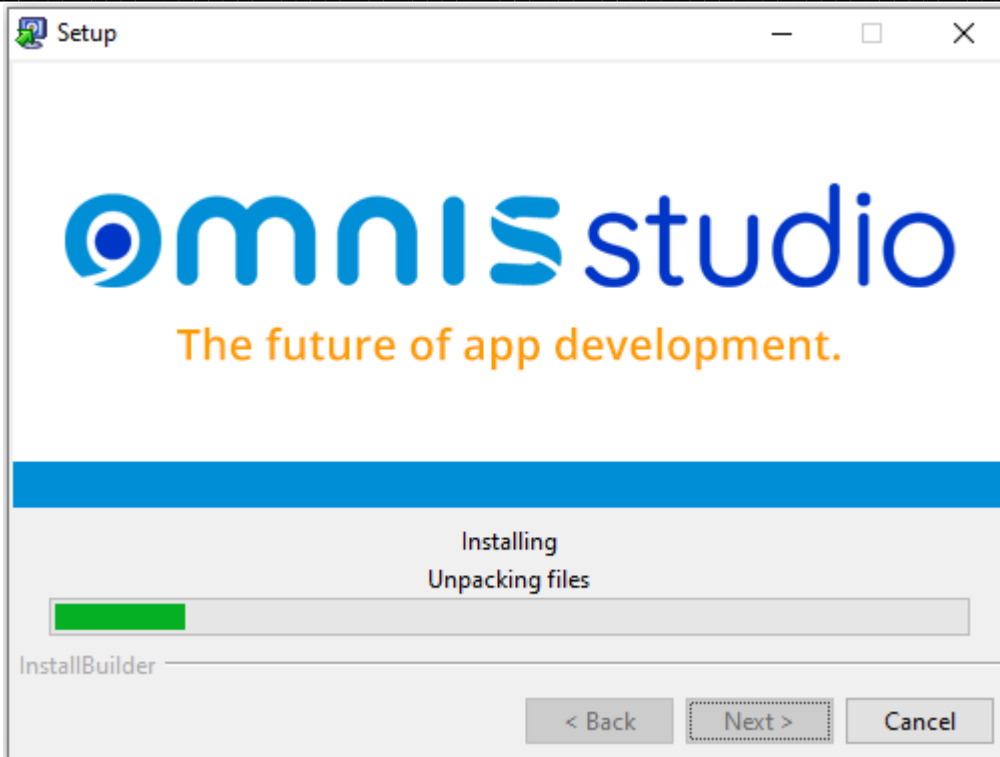
Default

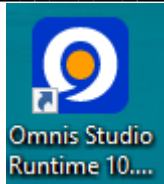


Default

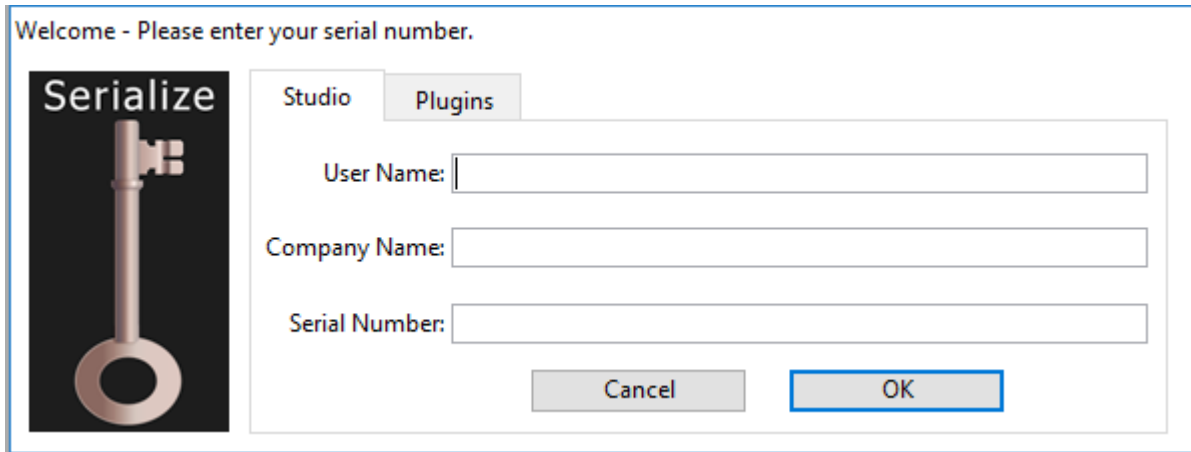


Default





You should end with an Icon on the Screen:- Double click on Icon the Omnis runtime should start.

A screenshot of a 'Serialize' dialog box. The title bar reads 'Welcome - Please enter your serial number.' On the left is a vertical panel with the word 'Serialize' at the top and a large image of a key below it. The main area has two tabs: 'Studio' (selected) and 'Plugins'. Below the tabs are three text input fields labeled 'User Name:', 'Company Name:', and 'Serial Number:'. At the bottom are 'Cancel' and 'OK' buttons.

Welcome - Please enter your serial number.

**Serialize**

Studio Plugins

User Name:

Company Name:

Serial Number:

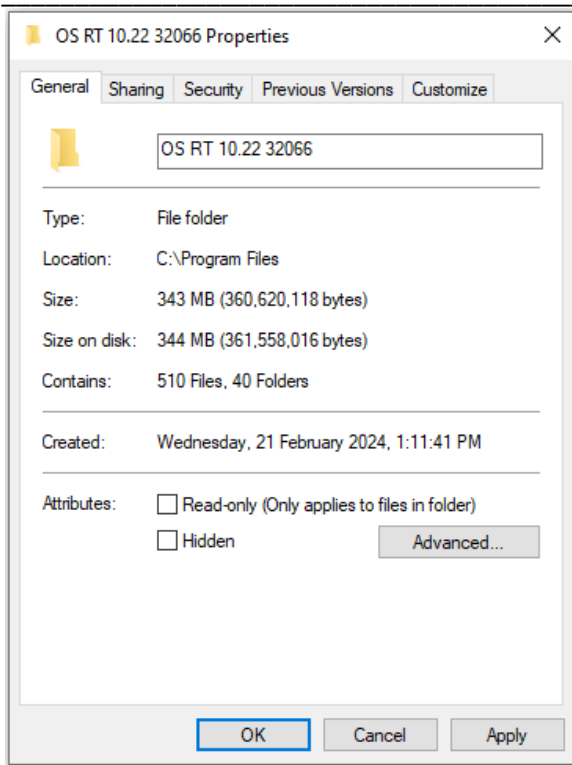
Cancel OK

You will be prompted for the username Company name and you should have been forwarded, the Omnis Runtime serial number. this will register your application.

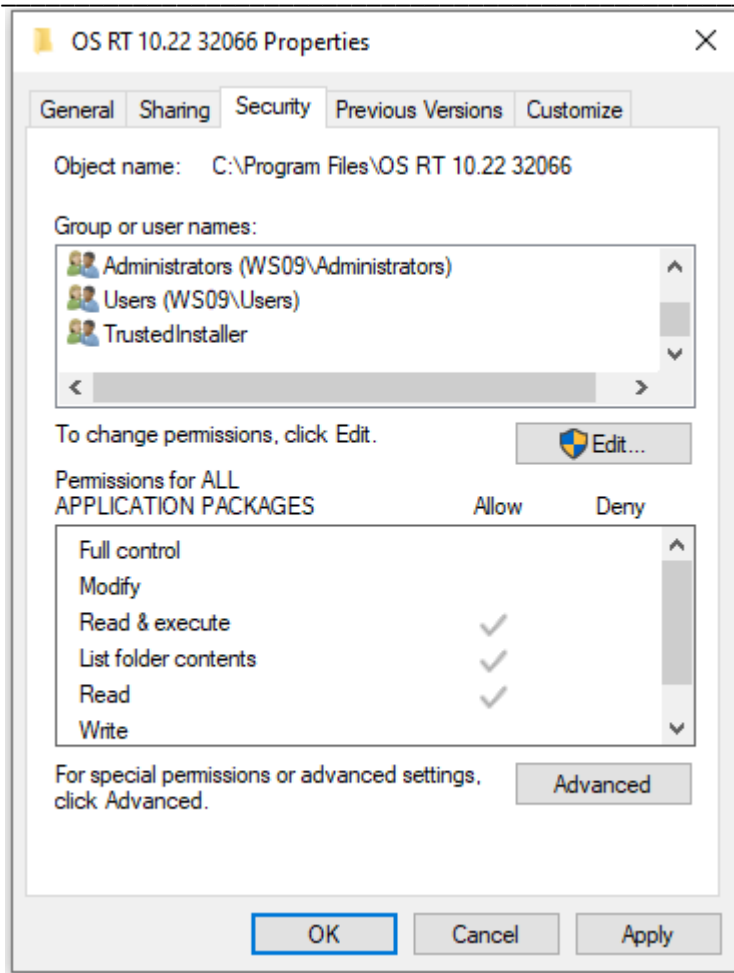
The next step is to set the permissions on the newly installed runtime folder, as some setting's are written to the runtime application.

First find the folder:- C:\Program Files\OS RT 10.22 32066

Do right click on the older: and get properties:-



then go to the "Security" tab.



You will need to set the User line and apply "Full control" and "Modify" lines and tick. Apply and OK setting make sure they stick.

Also do the same for Administrator and check

Nearly there, we can place the files called into Omnis Runtime folder :-

FastTrackSQLTable.txt

SQLFastTrackWeb10.lbs (you should be able to double click here to start)

A short cut can be created to start the Omnis Fast Track application.

