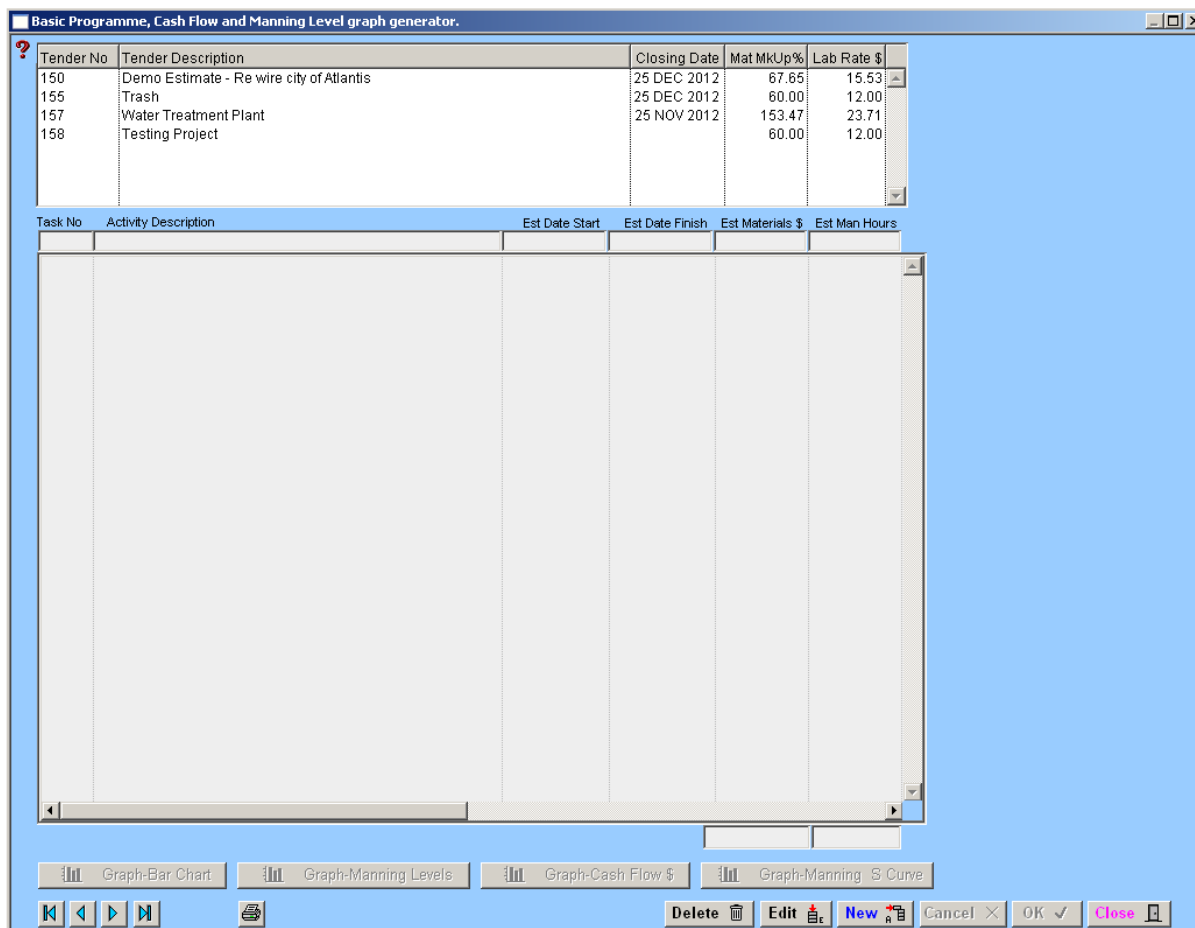


9.8 Programme

The program produces simple bar graphs. The Graphs produced are 'Bar Chart', 'Manning Levels' and "Cash Flow". The Graphs are suitable for approximately 30 activities before it becomes unreadable.

The program is attached to a Tender Number and must be active before you can produce the data displayed in the following window.



Should your intended program resemble the tender description breakup, then the program can be produced within minutes.

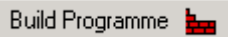
How it Works

Step 1

Ensure that the Start and Finish dates have been entered in the "**Tender Number**" window. "Estimating Menu > Tender Number".

Step 2

Select "**Special**" menu and then select "**Programme**". Highlight the tender and click on the 'Build Programme' button. You will be given the option of renumbering the "Activities" in increments of 1 to 5, then the option of having Material + Labour loads on one line, where as the other option loads on separate lines.



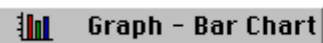
By clicking on the required line, a set of values can be placed in the Materials or Man Hours field, these values are recalculated from the latest tender values, it must be remembered that there is no automatic updating once the values have been entered in this window.

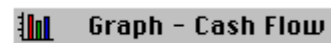
Step 3

Enter the Start and Finish dates into the task lines by using the “**Edit**” function. Once all the values have been entered, you can view the bar chart.

Step 4

Click on the appropriate graph button to display the graph. The graph can be reviewed and the dates further “Edited” to flatten the ‘Manning levels’ should they have unrealistic and unobtainable peaks.





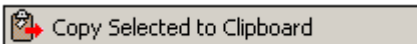
Step 5

Print out the charts once you have settled on the dates and number of activities. Click on the “Print” button, this eliminates the colour from the graphs as most offices only have Photocopying machines, Laser Printers and Fax Machines that are in black and white. When printing the program Bar Chart, if there are more than 20 activities the system will default to another report that prints over two (2) A4 sheets.

It is suggested that you allow for intervals in the numbering system so other activities can be added if required. As an example, if cable ladder was delivered to the site, and the client would pay for the goods once on site, the cash flow chart would need to reflect this. The user can add a new line, and by dissecting the value of Cable Ladder and Accessories from the existing line, and entering the values and the approximate week of delivery into the new line. Remember to take the values off the existing installation activity line.

Right Click Menu

This menu can be found by right clicking in the table in the window.



This function allows you to copy the selected records onto the clipboard for future use.

Notes