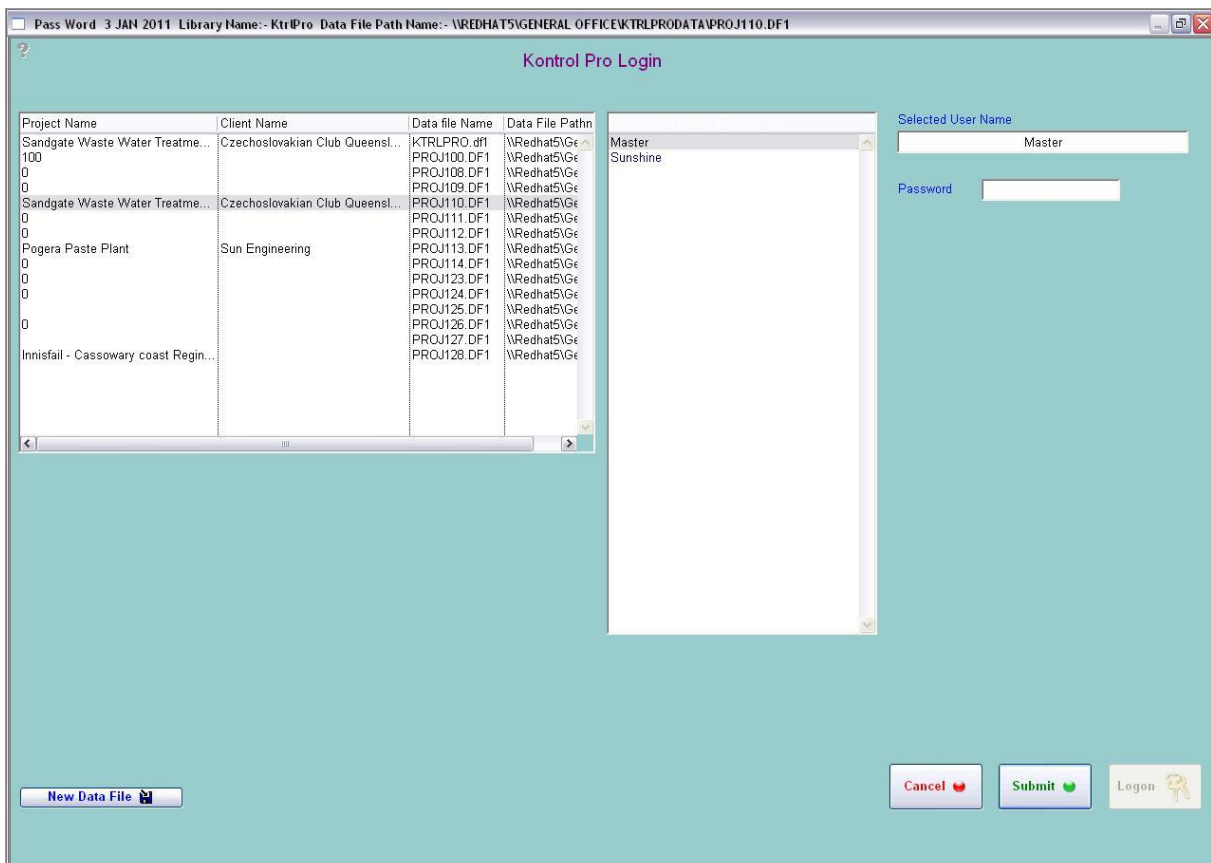


**Category 7**

**7.0 Change Default Project**



This controls the project you are working on. Should you wish to change Projects, you will find the “change Default Project” button in the bottom left-hand corner of the “Documentation” window. Then simply click on the required project.



**Question Mark**

Place cursor over the Question Mark and click once. The Question Mark will change colours, then move the cursor over any button and it will describe the button’s function.

**Notes**